

Organizational Structure

The School of Education at the University of Redlands is organized into six functional areas, including: three Academic Departments, the Dean's Office, Advising, Fieldwork and Credentialing Office, and the Center for Educational Justice. The three Academic Departments include: (1) Leadership and Higher Education which contains the Educational Administration, Higher Education and Doctoral program; (2) Counseling and Human Services which contains the School Counseling, Clinical Mental Health and new Online programs; and (3) Teaching and Learning with contains our Teacher Education, Special Education and Curriculum and Instruction programs.

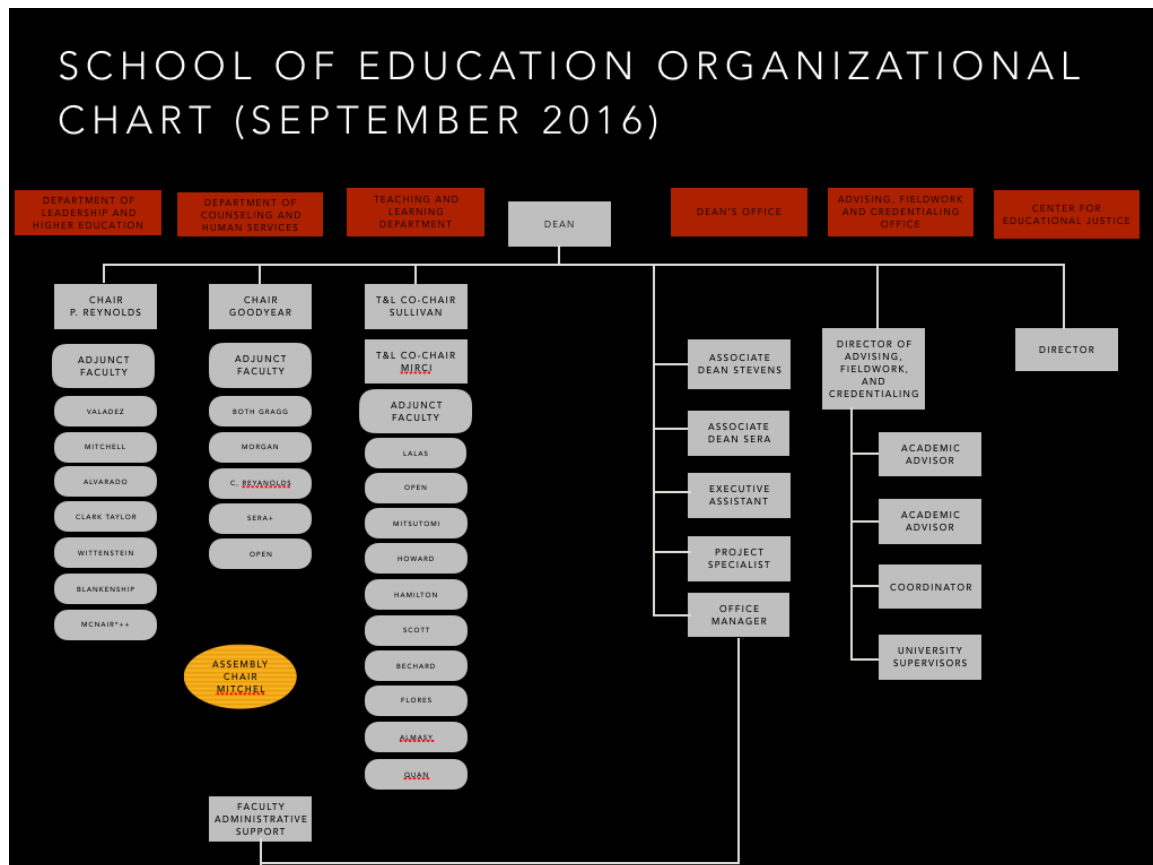


Figure 1: School of Education Organizational Chart (September 2016)

The Educational Administration program and the Preliminary ASC credential program is located within the Leadership and Higher Education program. Departmental Leadership is provided by the Chair, Dr. Reynolds, who reports to the Dean of the School of Education. The Educational Administration program has a program coordinator, which has been a contracted faculty member, Dr. McNair, who is also a current school principal. Dr. McNair reports to the Chair of her department, but also meets monthly with the Dean of the School of Education. Going forward it is envisioned that the new tenure track

faculty member in Educational Administration, Dr. Blankenship will assume the role of program coordinator.

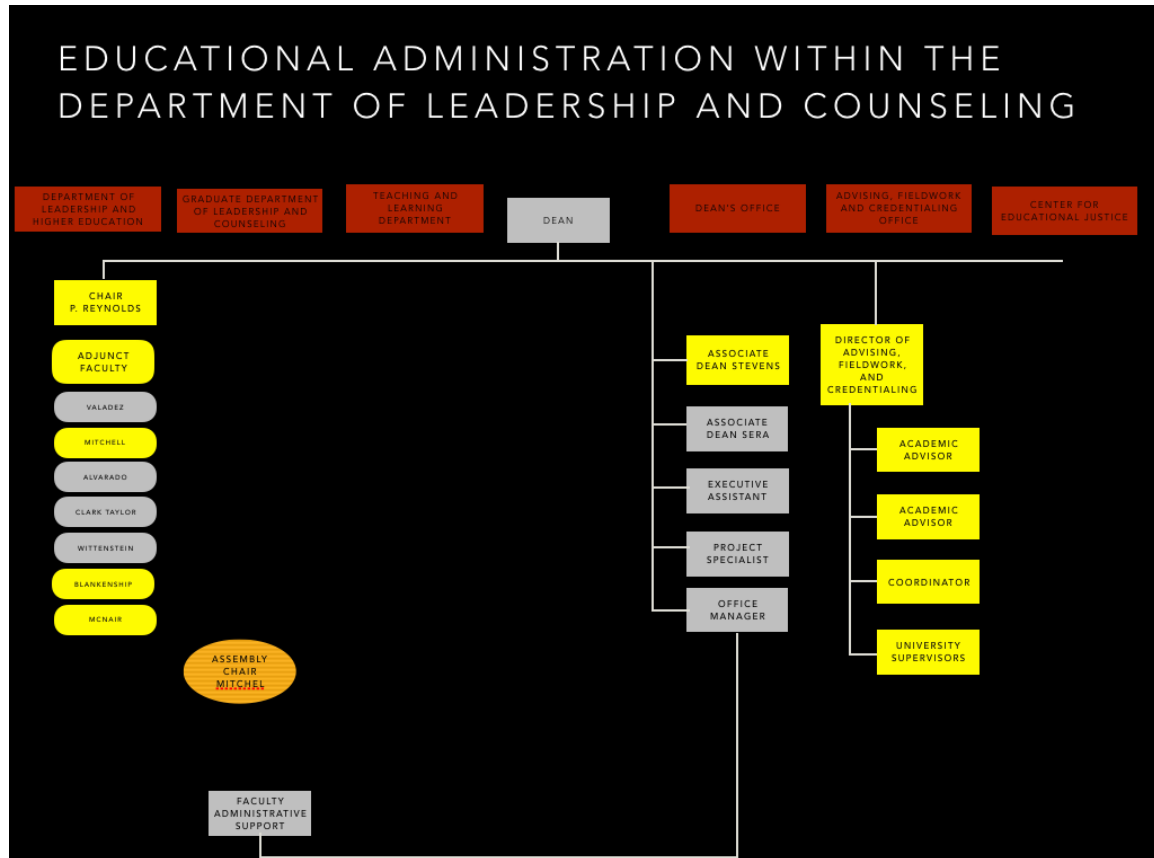


Figure 2: Highlighted Individuals Who Support the Educational Administration and PASC Program Implementation

Fieldwork for Educational Administration and the Preliminary ASC credential program is administratively coordinated by the Director of Advising, Fieldwork and Credentialing with support from her team.

Adjunct contracting, professional development and scheduling is completed by the Associate Dean, Dr. Stevens. Dr. Stevens works closely on faculty hiring with Department Chairs, and program coordinators to ensure professional qualifications of adjunct faculty in each course.